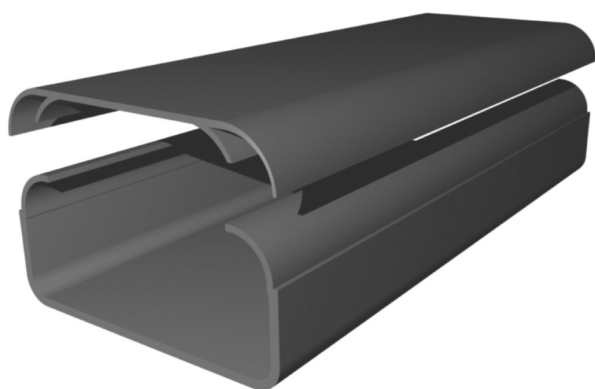


# 1 CABLE TRUNKING/DUCTING

# STRUTFAST

## Wiring Channels - PVC Trunking

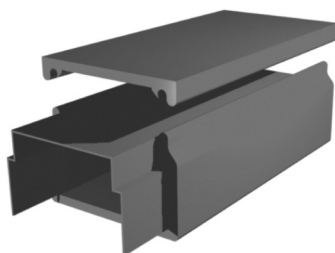
### INDUSTRIAL TRUNKING - GREY



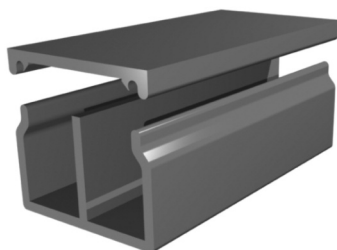
	NOMINAL SIZE (mm) W x H	STRAIGHT & COVER 3m	No of COMPARTMENTS
CLT/1	50 x 50	199.24	1
CLT/2	75 x 50	223.39	1
CLT/3	75 x 75	259.61	1
CLT/4	100 x 50	301.88	1
CLT/5	100 x 75	338.10	1
CLT/6	100 x 100	398.48	1

### COMPACT MINIATURE TRUNKING - WHITE

#### ONE COMPARTMENT RANGE



#### TWO COMPARTMENT RANGE



	NOMINAL SIZE (mm)	STRAIGHT & COVER 2m	STRAIGHT & COVER 3m	No of COMPARTMENTS
YT/1	16 x 16	13.80	31.40	1
YT/2	25 x 16	–	39.25	1
YT/3	40 x 16	–	70.64	1
YT/4	40 x 25	–	79.10	1
YT/5	40 x 40	–	86.34	1
NBT/4	110 x 40	–	227.00	1
NBT/4 TC	110 x 40	–	235.46	2

SWITCHING ACCESSORIES : NBT/4	SOCKETS (CLASSIC)	COVER
16A SSO C/T CLASSIC STD	91.00	52.00
13A SSO C/T CLASSIC	201.00	52.00